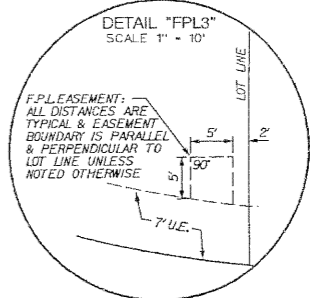
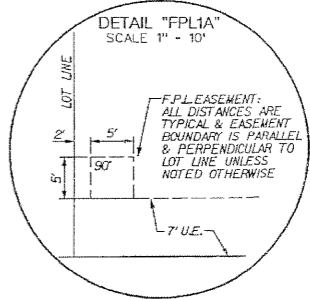
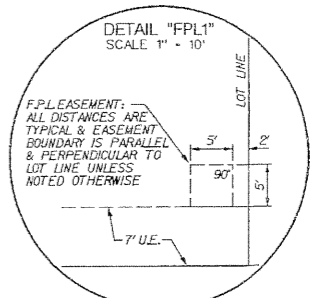
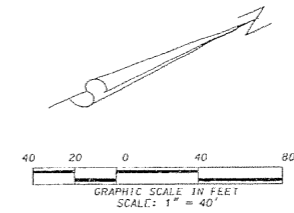
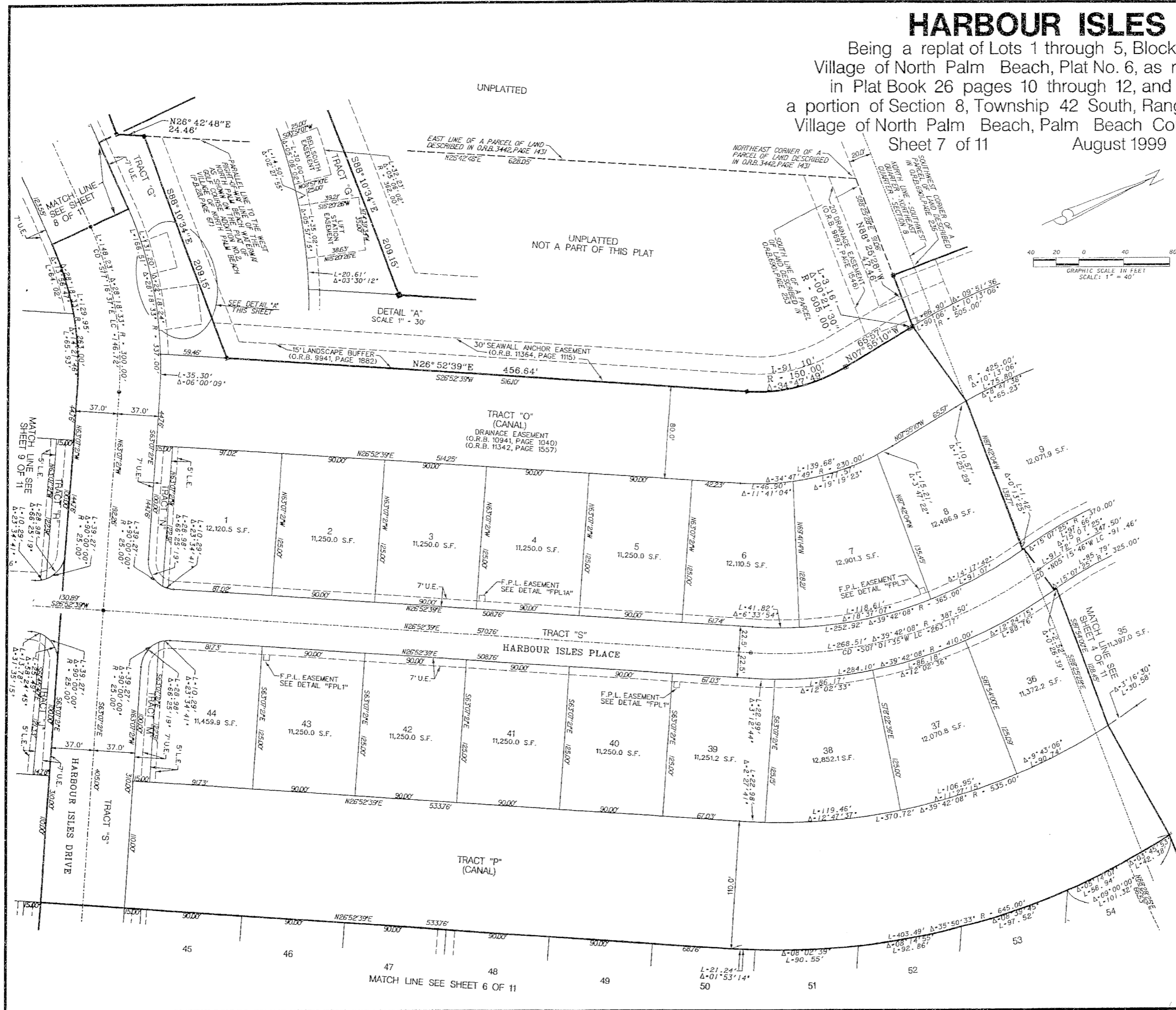


HARBOUR ISLES

Being a replat of Lots 1 through 5, Block 54,
 Village of North Palm Beach, Plat No. 6, as recorded
 in Plat Book 26 pages 10 through 12, and being
 a portion of Section 8, Township 42 South, Range 43 East,
 Village of North Palm Beach, Palm Beach County, Florida.
 Sheet 7 of 11 August 1999

117



LIDBERG LAND SURVEYING, INC.
 LB4431 675 West Indiantown Road, Suite 200, Jupiter, Florida 33458 TEL: 561-746-8454

CAD. REV. STATION \ SECTION \ 08-42-43 \ 96-594 \ SHEET7.DGN	JOB	95-594
REF. REV. STATION \ SECTION \ 08-42-43 \ 96-594 \ 96-594.DGN	DATE	10/14/99
FLD. FB. PG.	DATE	10/14/99
OFF. R.W.	SHEET 7 OF 11	DWG. 095-594P
CKD. D.C.L.		